



replacement parts industries, inc.

"The Alternate Source"

CALL 800-221-9723 or 818-882-8611 • FAX 818-882-7028
E-MAIL: techsupport@rpiparts.com • WEBSITE: www.rpiparts.com

EXPLODED VIEWS & REPAIR/SERVICE TIPS

- Handpiece Control Block (RPI Part #ADK142)
- Air Cover Valve Kit (RPI Part #ADK143)
- Water Cover Valve Kit (RPI Part #ADK144)
- Master Control Block Kit (RPI Part #ADK150)
- Control Block Service Kit (RPI Part #ADK094)

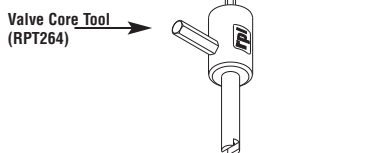
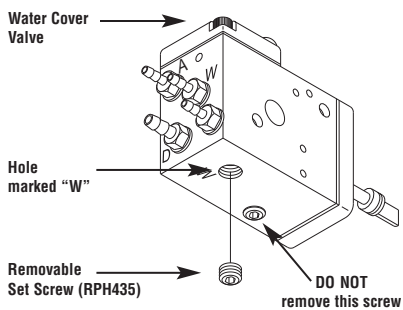
TABLE OF CONTENTS

	PAGE
Removal of a Broken Stem	1
Exploded View of Control Block & Kits Most Frequently Used	2-3
Tubing Hook-up & Calibration Guide	4-5
Using the Right Stem	5
Using the Right Tool & Lube	6

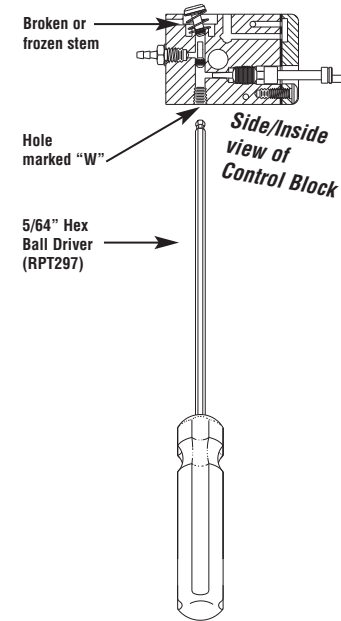
REMOVAL OF A BROKEN STEM IS AS EASY AS 1-2-3 WITH RPI'S CONTROL BLOCK

1 Remove set screw (RPI Part #RPH435) from the hole marked "W" using the Valve Core Tool (RPI Part #RPT264).

2 Remove the water cover valve.



3 Gently insert the 5/64" Hex Ball Driver (RPI Part #RPT297) through the hole marked "W" and push the broken or frozen stem out of the block.



EXPLODED VIEW OF CONTROL BLOCK & KITS MOST FREQUENTLY USED

ADK142 **HANDPIECE CONTROL BLOCK**
RPI Part #ADK142
OEM Part #38-0223-00
Includes assembled control block, plus:
(1) Sleeve Clamp (RPI Part #ADC035)
(2) Gasket (RPI Part #ADG031)
(3) Uni-Clamp (RPI Part #ADC034)

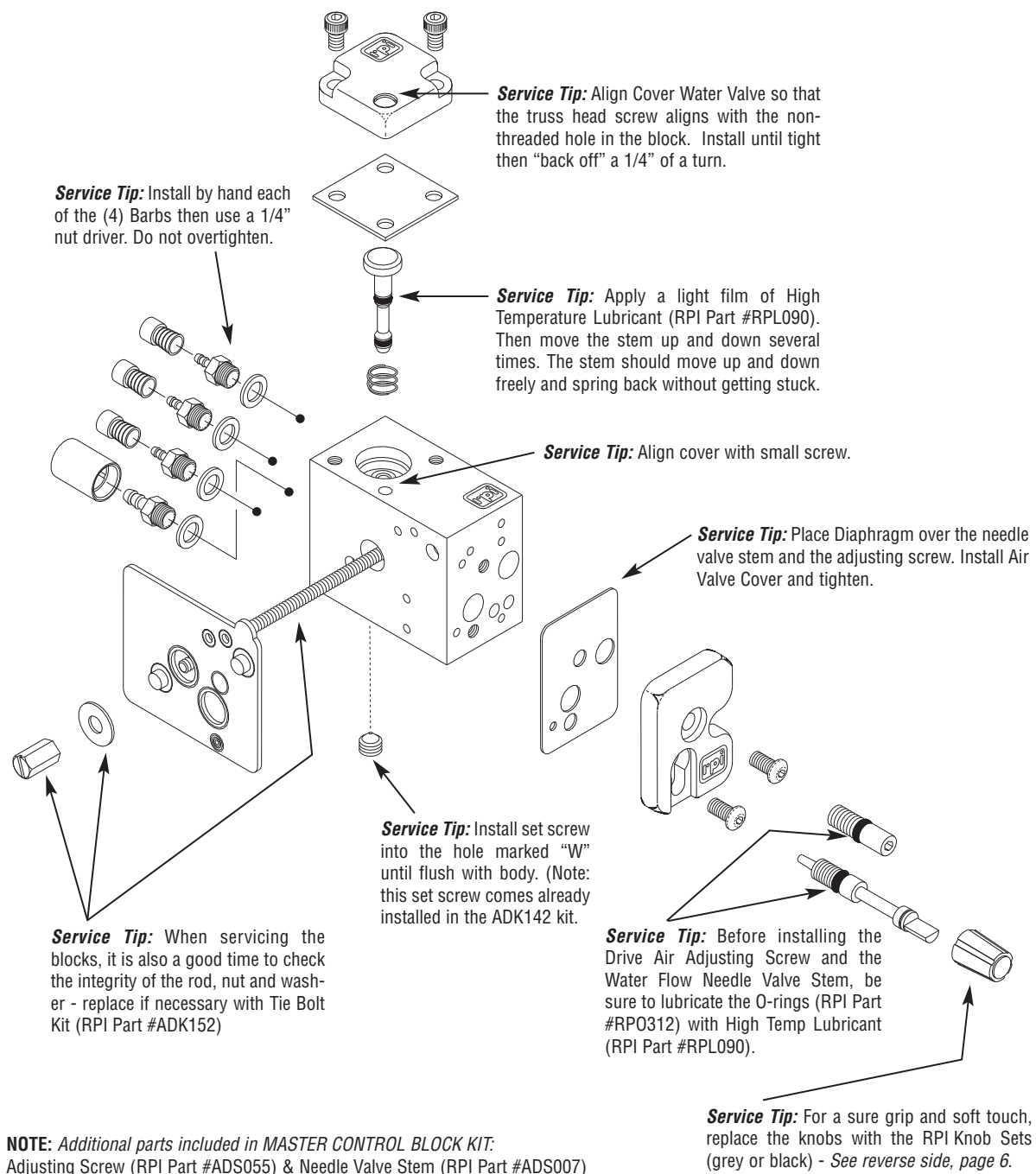
ADK150 **MASTER CONTROL BLOCK KIT**
RPI Part #ADK150
OEM Part #N/A
Includes parts listed with NOTE, plus:
(1) Air Cover Valve Kit (RPI Part #ADK143)
(1) Water Cover Valve Kit (RPI Part #ADK144)

ADK143 **AIR COVER VALVE KIT**
RPI Part #ADK143
OEM Part #90-0304-00
Includes:
(1) Air Cover Valve
(1) Diaphragm (RPI Part #ADD024)
(2) Button Head Screw (RPI Part #ADS097)
(2) O-Ring (RPI Part #RPO312)

ADK144 **WATER COVER VALVE KIT**
RPI Part #ADK144
OEM Part #N/A
Includes:
(1) Water Cover Valve with Truss Head Screw
(1) Diaphragm (RPI Part #ADD022)
(1) Stem (New Style) (RPI Part #ADS123)
(1) Helical Comp Spring (RPI Part #ADS046)
(2) Socket Head Cap Screw (RPI Part #ADS116)

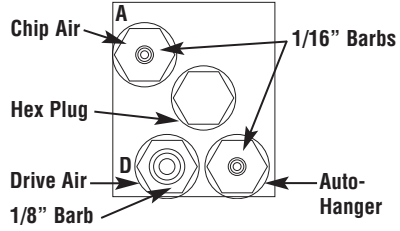
ADK094 **CONTROL BLOCK SERVICE KIT**
RPI Part #ADK094
OEM Part #90-0321-00
Includes:
(1) Helical Comp Spring (RPI Part #ADS046)
(1) Stem (New Style) (RPI Part #ADS123)
(1) Diaphragm (RPI Part #ADD022)
(1) Diaphragm (RPI Part #ADD024)
(2) Gasket (RPI Part #ADG031)
(2) Button Head Screw (RPI Part #ADS097)
(2) O-ring (RPI Part #RPO312)

ADK152 **3-BLOCK TIE BOLT KIT**
RPI Part #ADK152
OEM Part #38-0193-00
Includes:
(1) Threaded Rod (#6-32 x 3-1/4")
(1) #6-32 Hex Nut
(1) #6 Washer (RPI Part #ADW039)

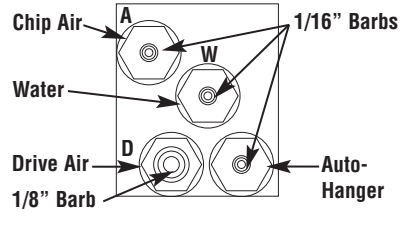


TUBING HOOK-UP & CALIBRATION GUIDE

PORT IDENTIFICATION REAR VIEW FOR SLOW SPEED HANDPIECE DRY BLOCK

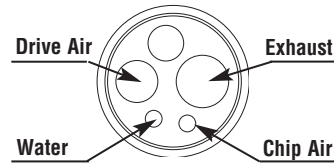


PORT IDENTIFICATION REAR VIEW FOR HIGH SPEED HANDPIECE WET BLOCK

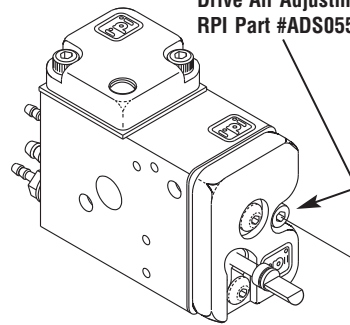


Service Tip: After installing and before calibrating, verify proper hook-up of handpiece tubing. See “Handpiece Tubing Connection - End View” to the right.

HANDPIECE TUBING CONNECTOR END VIEW



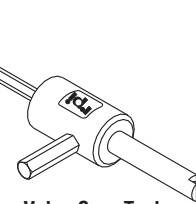
Drive Air Adjusting Screw RPI Part #ADS055



After each installation or servicing of the Handpiece Control Block, calibrate the Drive Air Adjusting Screw (RPI Part #RPT264). Using the Valve Core Tool (RPI Part #RPT264), adjust the Drive Air by turning clockwise to decrease and counter-clockwise to increase. Then, using a calibration gauge to adjust the Drive Air to conform to what headpiece is being used.

CALIBRATION GUIDE

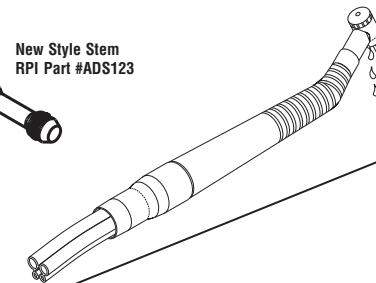
- HIGH SPEED use 32 - 38 PSI
 - SLOW SPEED use ~45 PSI
- For specific air pressure calibration, see manufacturer specifications.



Valve Core Tool RPI Part #RPT264

USING THE RIGHT STEM

When replacing the handpiece control block stem, use the new style stem (RPI Part #ADS123) because it helps prevent saliva draw-back into the handpiece and handpiece tubing (non-retraction). It also has a smaller top for easier replacement. And when using this stem, be sure to remind the operator that there will be a three second delay while the water drips before shut-



Remind the operator that there will be a three second delay while the water drips before shut-down.

Old Style Stem RPI Part #ADS005

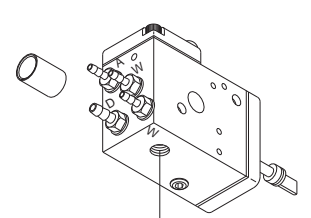
When replacing the handpiece control block stem do not use the old style stem (RPI Part

USING THE RIGHT TOOL & LUBE

Use this end to install Sleeve Clamps (RPI Part #ADC035)

Universal Sleeve Tool RPI Part #RPT296

Use this end to install Uni-Clamps (RPI Part #ADC034)

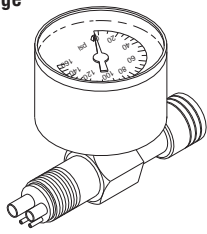


Water Stem Set Screw RPI Part #RPH435

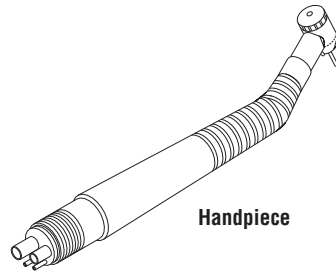
Valve Core Tool RPI Part #RPT264

Use to remove the Water Stem Set Screw (RPI Part #RPH435). **NOTE: The RPI Water Stem Set Screw (RPI Part #RPH435) is re-use**

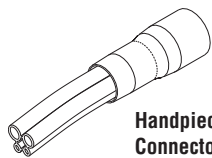
Calibration Gauge



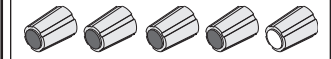
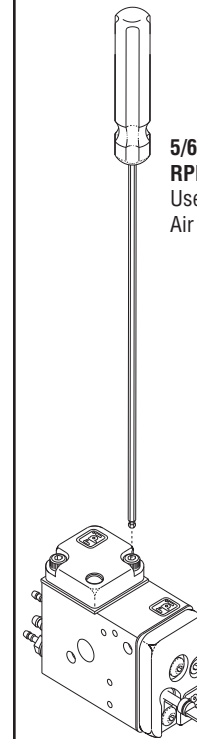
Handpiece



Handpiece Tubing Connector



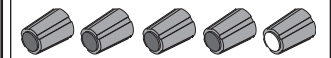
5/64" Hex x 7" Long Balldriver RPI Part #RPT297
Use to remove and install the Air Valve Cover



GREY KNOB SET RPI Part #ADK172

- Includes (4) Grey Knobs with Blue Dot (RPI Part #ADK146) and (1) Grey Knob with Yellow Dot (RPI Part #ADK148)

Fits Models: Decade, Excellence & Mini-Trol



BLACK KNOB SET RPI Part #ADK171

- Includes (4) Black Knobs with Blue Dot (RPI Part #ADK145) and (1) Black Knob with Yellow Dot (RPI Part #ADK147)

Fits Models: Decade, Excellence & Mini-Trol



High Temp Lubricant RPI Part #RPL090

- Non-silicone lubricant
- 5 units per package (1/2 gram per unit)
- Recommended use: Liberally lubricate non-silicone o-rings